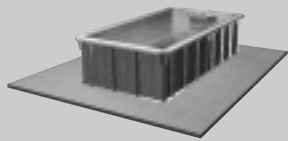


# PERMIT CONSIDERATIONS

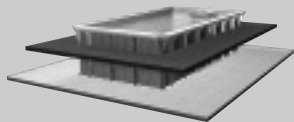


*Indoors*

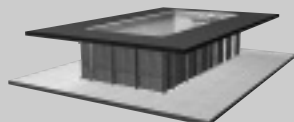
*Outdoors*



*Fully Aboveground Installations*



*Partially In-Ground Installations*



*Fully In-Ground Installations*

## The Endless Pool and Code Requirements

The entire Endless Pool system is ETL listed, Ref. #2001779 and conforms to UL Standard #1563. Individually, all electrical components of the Endless Pool are UL and/or CSA approved. As defined by the International Residential Code (IRC), the Endless Pool is considered an aboveground or an in-ground pool depending on the installation. That is to say, customers can install our Endless Pool Kit above-ground on a garage or basement floor or in the backyard or they can sink it partially or fully in-ground. The unit is completely self-supporting. As required by the IRC the Endless Pool meets all the following standards: ANSI/NSPI Standards #3 (Permanently Installed Residential Spas), #4 (Aboveground/On-ground Residential Swimming Pools), #5 (Residential In-ground Swimming Pools), and #6 (Portable Spas). The appropriate governing standard is dependent on the installation method and the requirements and definitions used by the local governing bodies.

### General Description of an Endless Pool

An Endless Pool is a free-standing, steel panel, vinyl lined pool or spa. Filled with water, the standard Endless Pool exerts an evenly distributed load of 200 lbs. per square foot, with a total weight of 10 tons. The water depth of the standard Endless Pool is 39" with 24" above the perimeter return channels, and has a surface area of less than 100 square feet. A current is generated in the pool/spa by a 16" diameter propeller hidden inside a protective housing. The water is kept warm and clean using industry standard equipment, including a 108 watt Circulating Pump, Cartridge Filter and Electric or Gas Heater.

### Filling and Draining

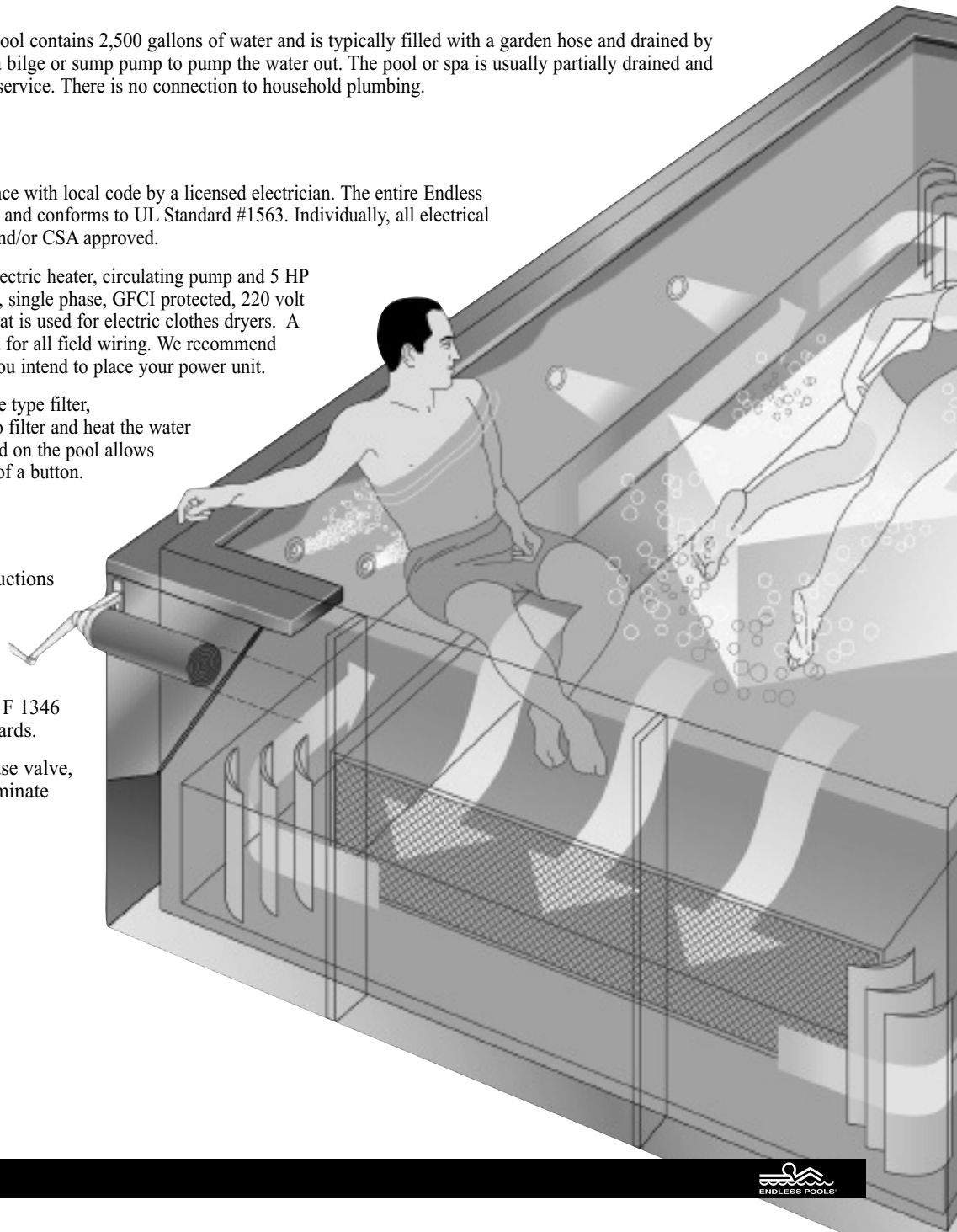
The standard flat bottom 7' x 14' Endless Pool contains 2,500 gallons of water and is typically filled with a garden hose and drained by siphoning through a garden hose or using a bilge or sump pump to pump the water out. The pool or spa is usually partially drained and refilled every three years for programmed service. There is no connection to household plumbing.

### Electric Requirements

- The equipment must be wired in accordance with local code by a licensed electrician. The entire Endless Pool system is ETL listed, Ref. #2001779 and conforms to UL Standard #1563. Individually, all electrical components of the Endless Pool are UL and/or CSA approved.
- All pool equipment including the 4 kW electric heater, circulating pump and 5 HP hydraulic power unit runs off one 30 amp, single phase, GFCI protected, 220 volt service. This is the same type of circuit that is used for electric clothes dryers. A minimum of 10AWG wire should be used for all field wiring. We recommend you install a shut off within 5' of where you intend to place your power unit.
- The Water Quality System uses a cartridge type filter, electric heater and super-efficient pump to filter and heat the water continuously. A digital controller mounted on the pool allows you to set the temperature with the press of a button.

### Safety Considerations

- There are no protrusions or other obstructions in the swimming area, which may cause entrapment or entanglement of the user.
- The safety cover that is available with the Endless Pool complies with ASTM F 1346 as required by the IRC and NSPI standards.
- The skimmer/filter is fitted with a release valve, and an anti-entrapment faceplate to eliminate any entrapment hazard.



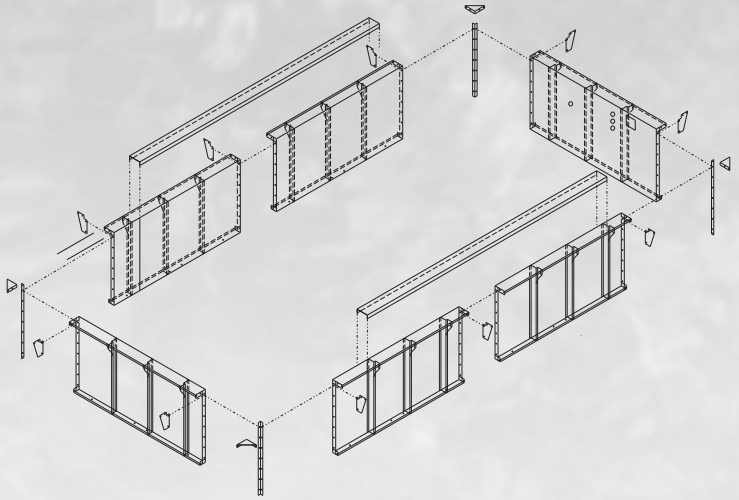
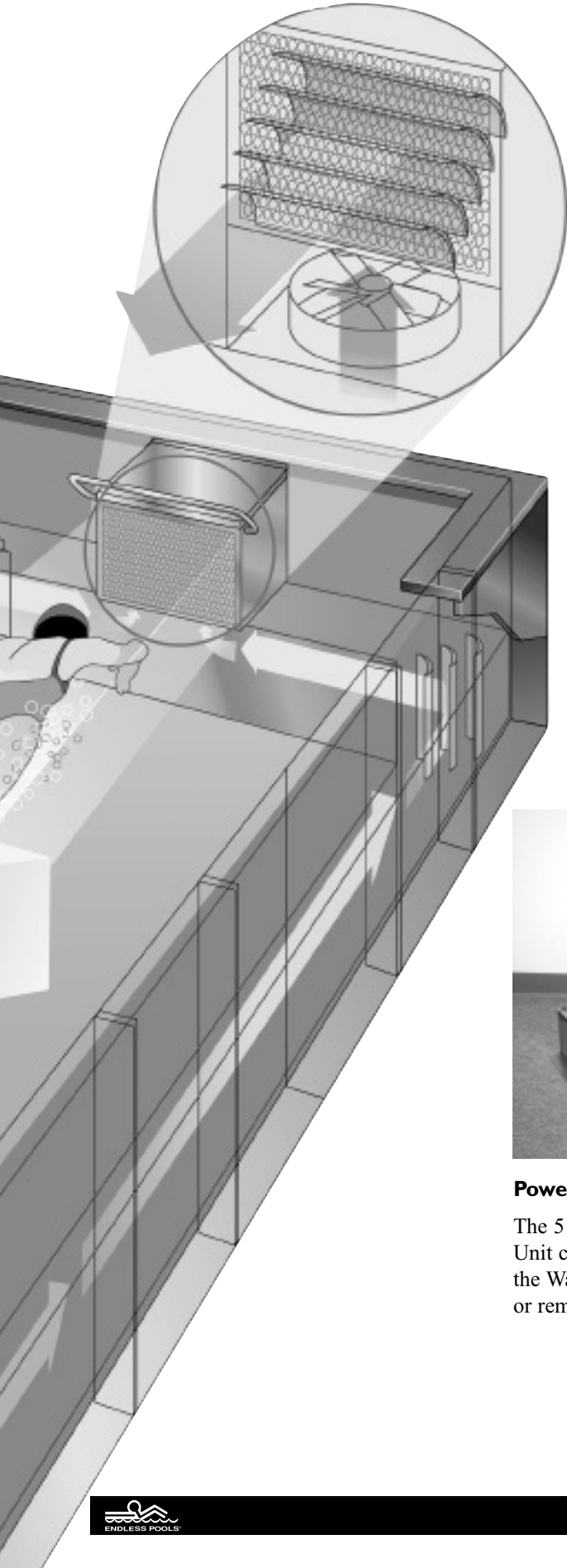
Intertek

2008 VGB Compliant

## Transportability

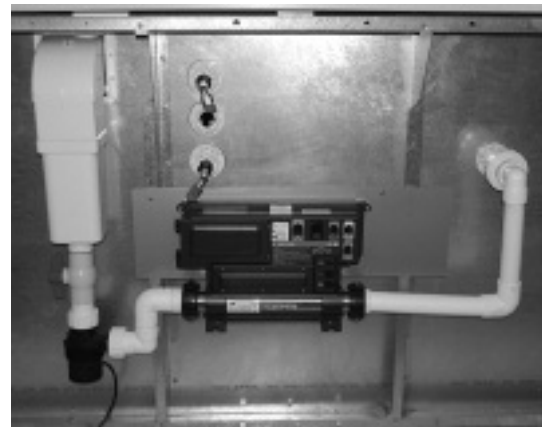
Unlike a standard swimming pool, the Endless Pool can be disassembled and relocated. The Endless Pool is delivered to the job site in kit form for bolt-together assembly. The Endless Pool can be unbolted and moved with the homeowner should they relocate.

Your Endless Pool installation will be classified as a pool or spa based upon your local ordinances, local code office interpretation, and definitions contained in the National Electric Code, Article 680, "Swimming Pools, Fountains, and Similar Installation.", the National Spa and Pool Institute and the International Residential Code.



### Power Unit

The 5 hp Hydraulic Power Unit can be located beside the Water Quality System or remotely.



### Water Filtration

The Water Quality System is mounted on the front panel of the pool and is pre-plumbed for ease of installation.



Endless Pools • 1601 Dutton Mill Rd • Aston, PA 19014-2931  
800-732-8660 • 610-497-9328 fax • [www.endlesspools.com](http://www.endlesspools.com)